

Cosmic portraits

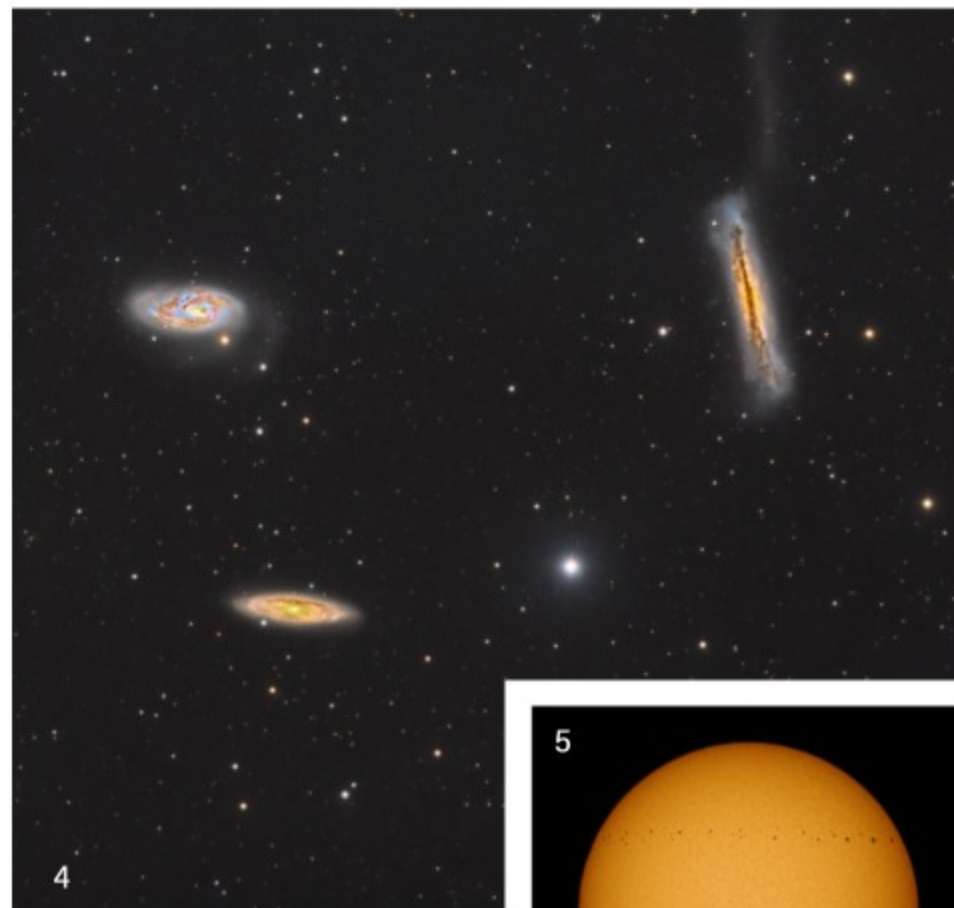


1. ETNA ERUPTS
A colorful series of star trails is reflected on Lake Biviere di Cesarò in Sicily, while in the background, Mount Etna erupts on the night of March 12/13, 2021. This incredible combination of fire, water, earth, and sky was captured with a Canon 6D at ISO 3200 and a 20mm f/2 lens in 1,278 15-second exposures.
- *Dario Giannobile*

2. THE MANE EVENT
Sharpless 2-132, also called the Lion Nebula, shines in this image representing 9.5 hours of exposure with a 5-inch scope. The Hubble palette used to process the image accentuates the dark clouds and Bok globules that dot the glowing gas. It also reveals how many of the nebula's features — like its "tail" on the right — are shock waves formed at the edges of expanding bubbles blown outward by young, hot stars.
- *Terry Hancock*

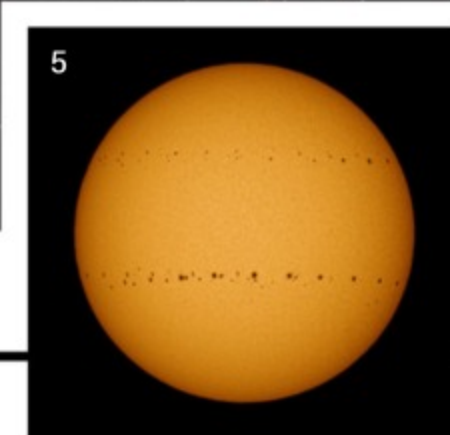


3. NOT THE MOON
The Milky Way arcs over the dormant volcanic landscape of Craters of the Moon National Monument in Idaho. On the left, the fuzzy outline of the Andromeda Galaxy (M31) is visible; on the right shine Saturn and Jupiter (brighter). This panorama is made of 77 individual images of 10 seconds each at f/1.4 and ISO 10,000.
- *Matt Dieterich*



4. LEO'S TRIO
The Leo Triplet is a group of three interacting spiral galaxies: M65 (bottom left), M66 (top left), and NGC 3628 (right). This LRGB image was taken with a 3.25-inch refractor and a total exposure of 21.4 hours.
- *David Wills*

5. GOT SOMETHING ON YOUR FACE, SUN!
This composite image represents 100 consecutive daily shots from late 2020 and the spring of 2021, revealing several groups of sunspots moving across our star's face. The imager, based in Kolkata, India, used a Nikon D5600 and a 600mm zoom lens with a white light solar filter.
- *Soumyadeep Mukherjee*



SEND YOUR IMAGES TO:
Astronomy Reader Gallery,
P.O. Box 1612, Waukesha, WI 53187.
Please include the date and location of the image and complete photo data: telescope, camera, filters, and exposures. Submit images by email to readergallery@astronomy.com.